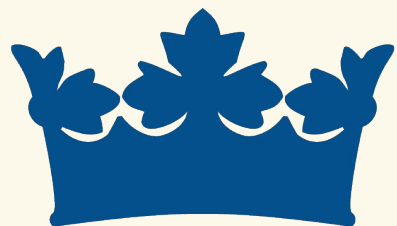


Leigh
Stationers' Academy

Welcome

Joseph Sparks, Principal

Welcome to Leigh Stationers' Academy

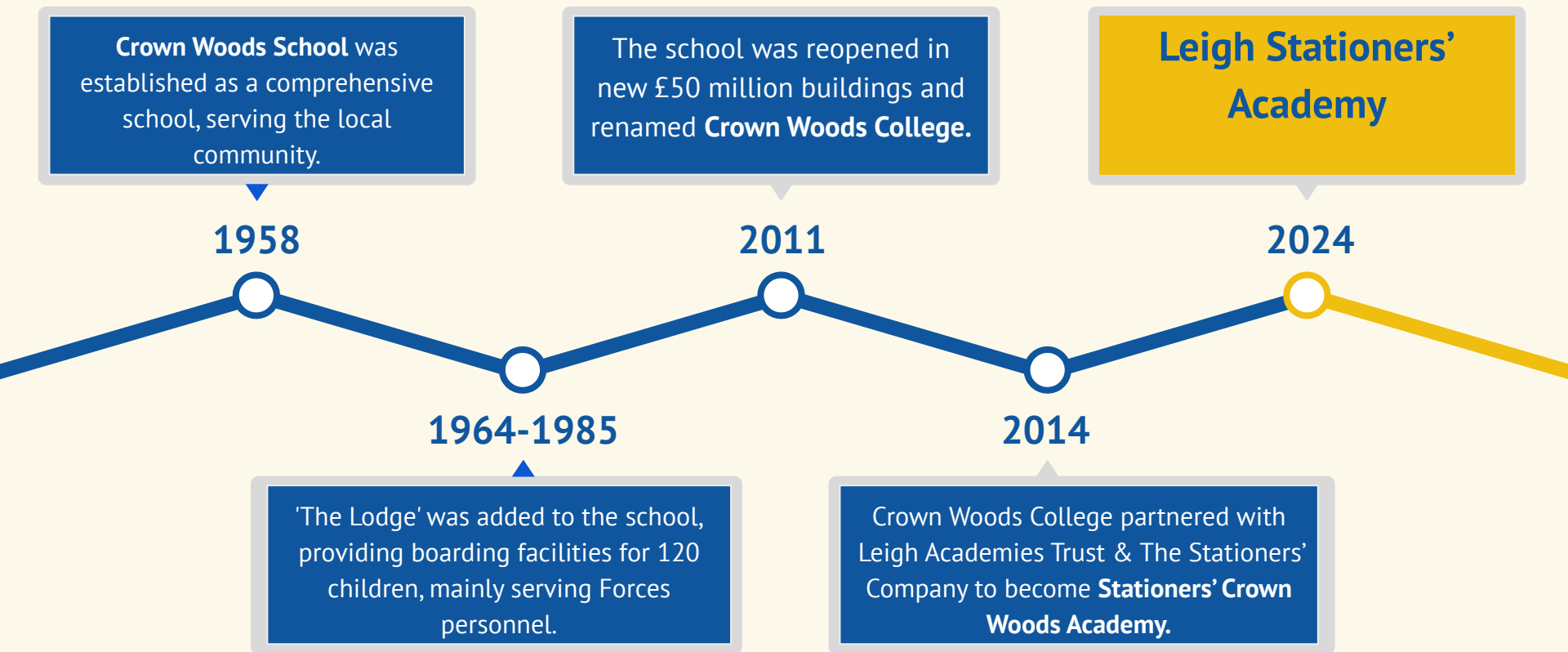


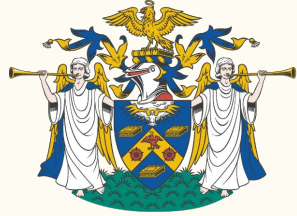
STATIONERS'
CROWN WOODS ACADEMY



Leigh
Stationers' Academy

Welcome to Leigh Stationers' Academy

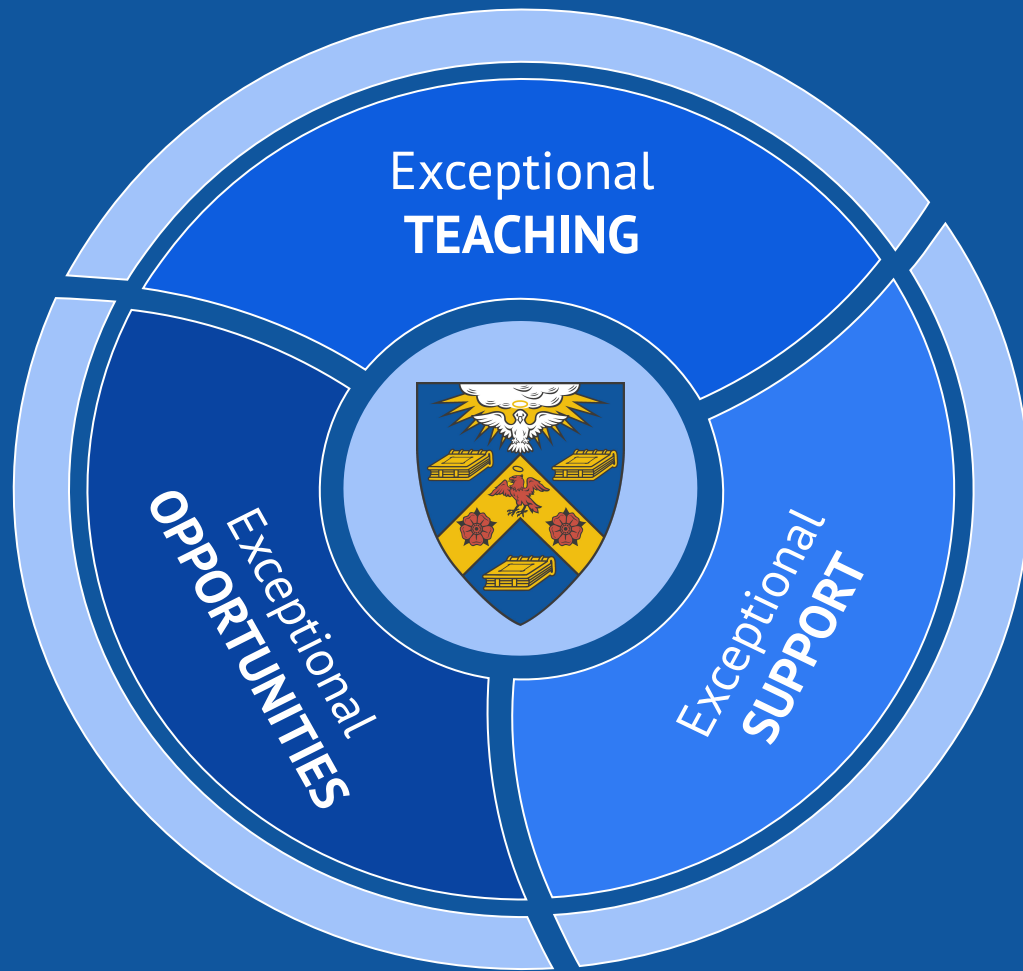




Leigh
Stationers' Academy

A COMMUNITY WHERE NO STUDENT IS LEFT BEHIND

...every young person should feel **known, valued, and supported**
to **succeed – academically, socially, and personally.**



Leadership | Scholarship | Achievement

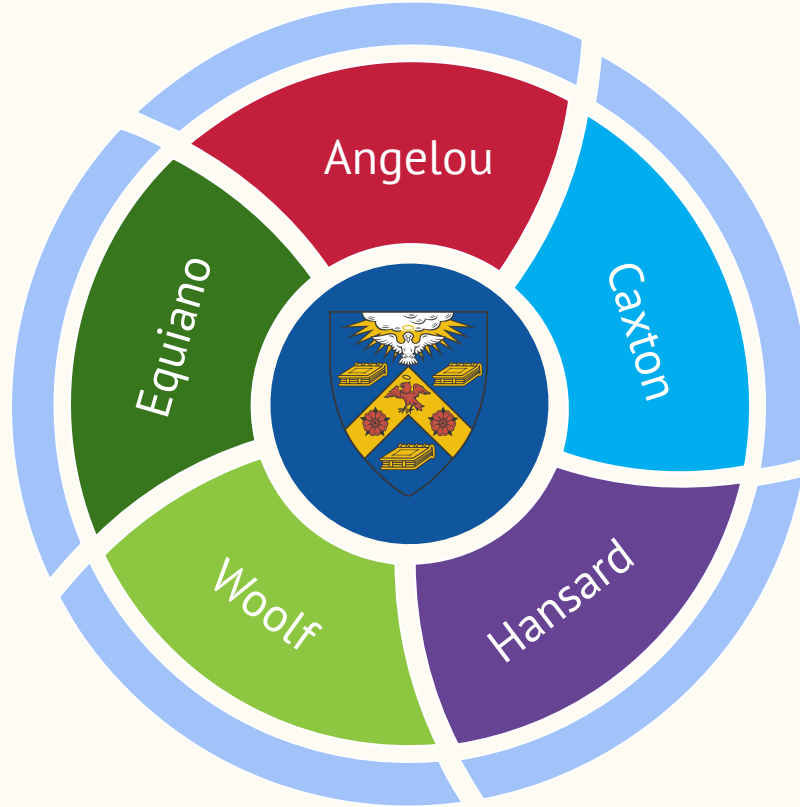


Leadership | Scholarship | Achievement

Exceptional **SUPPORT**

"Pupils are kept **safe** at school. They appreciate the **close working relationships** that they build with staff through belonging to one of the 'four small schools'. **Pupils know and value that staff listen to any concerns.**"

Exceptional **Support**



Welcome to
**Leigh Stationers'
Academy**

- Exceptional
 - Support
 - Teaching
 - Opportunities
- Next Steps
- Questions



Exceptional Support



Angelou, Hansard & Caxton Colleges are for pupils in Years 7-11.

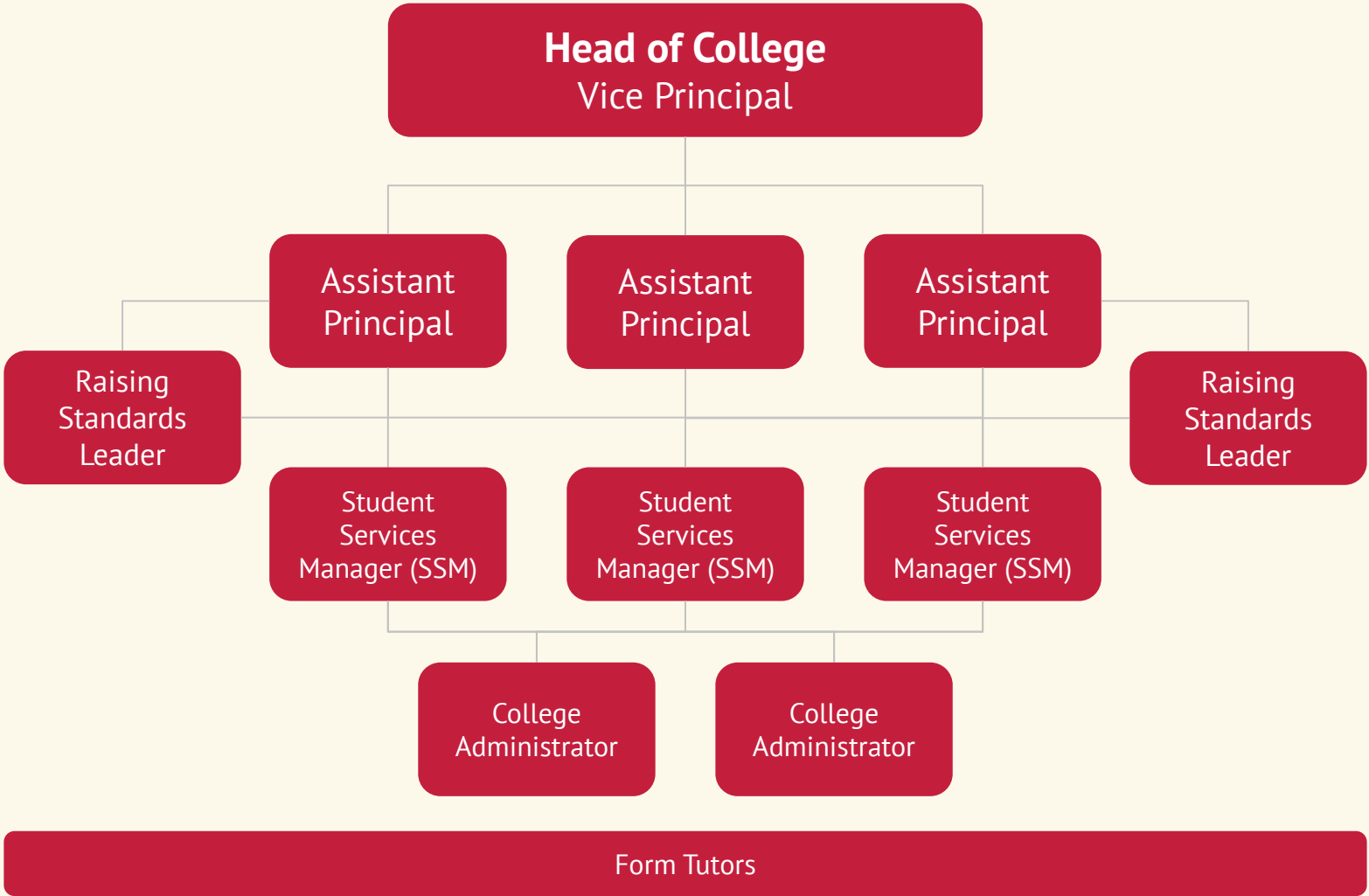
Hansard (formerly Delamere) is our grammar stream.

Woolf College is for pupils in Years 12 & 13.

Equiano College is our designated special provision for pupils with moderate learning difficulties.

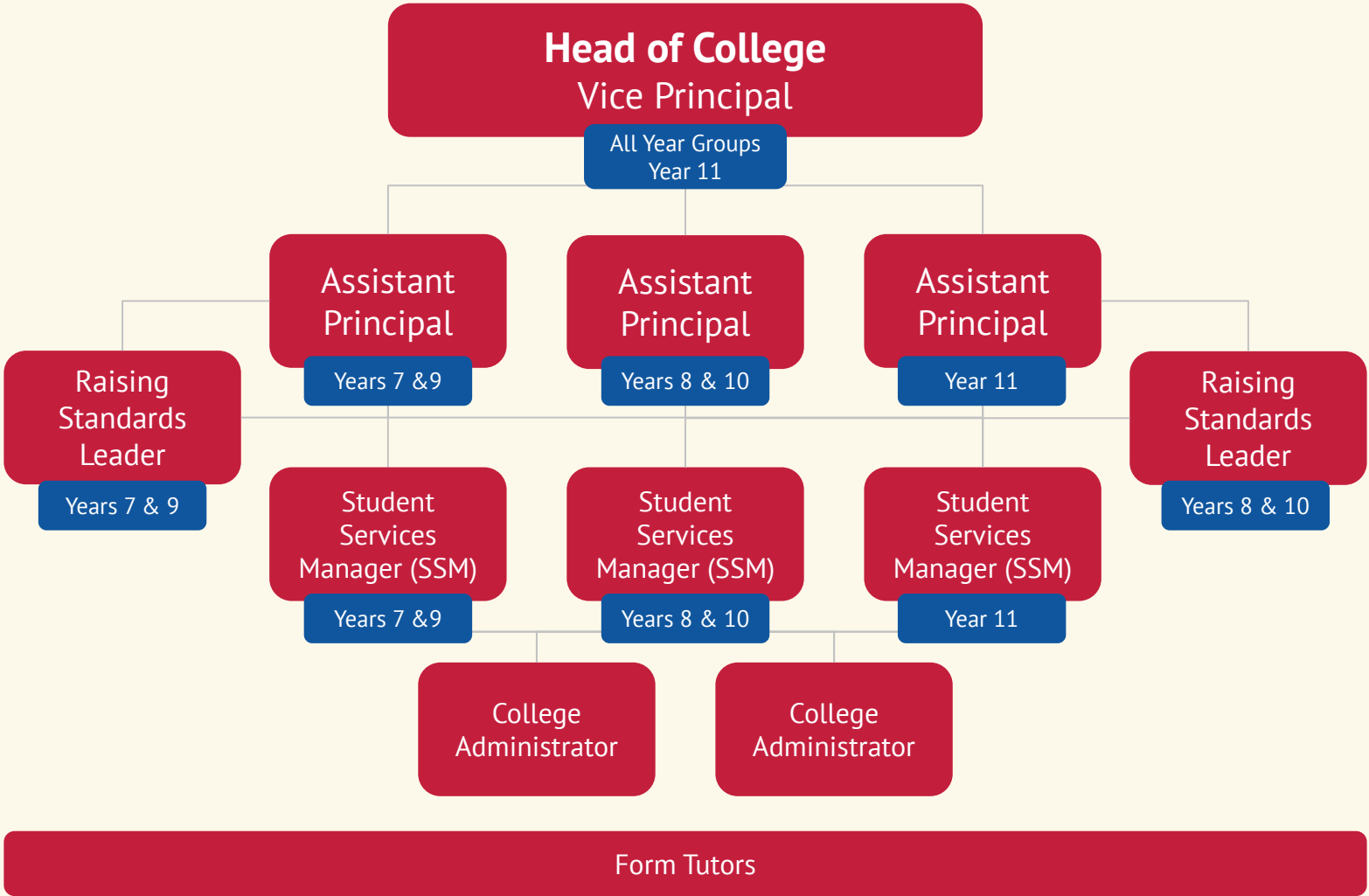
Welcome to
Leigh Stationers' Academy

- Exceptional
 - Support
 - Teaching
 - Opportunities
- Next Steps
- Questions



Welcome to
**Leigh Stationers'
Academy**

- Exceptional
 - Support
 - Teaching
 - Opportunities
- Next Steps
- Questions



Welcome to
**Leigh Stationers'
Academy**

- Exceptional
 - Support
 - Teaching
 - Opportunities
- Next Steps
- Questions



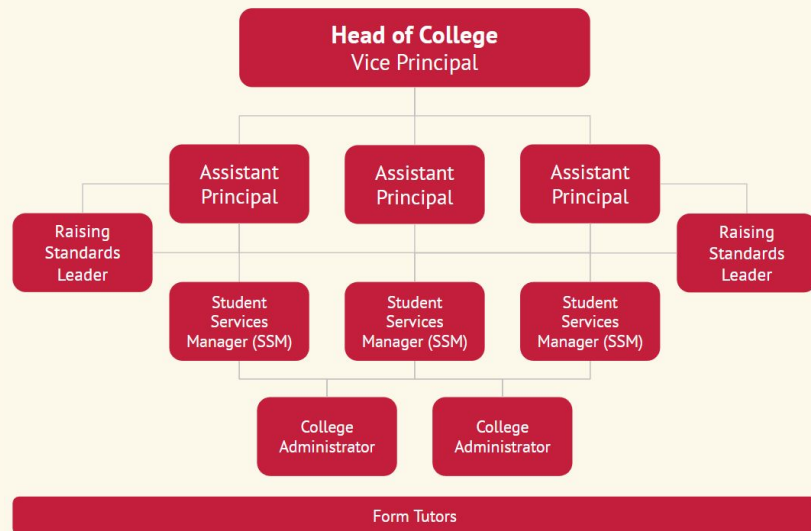
Exceptional Support

Every pupil belongs to a:

- A college of 450 pupils
- A year group of 90 pupils
- A strong family-like unit

Every pupil is known by an adult.

Every parent/carers knows who to contact for support.



Welcome to
**Leigh Stationers'
Academy**

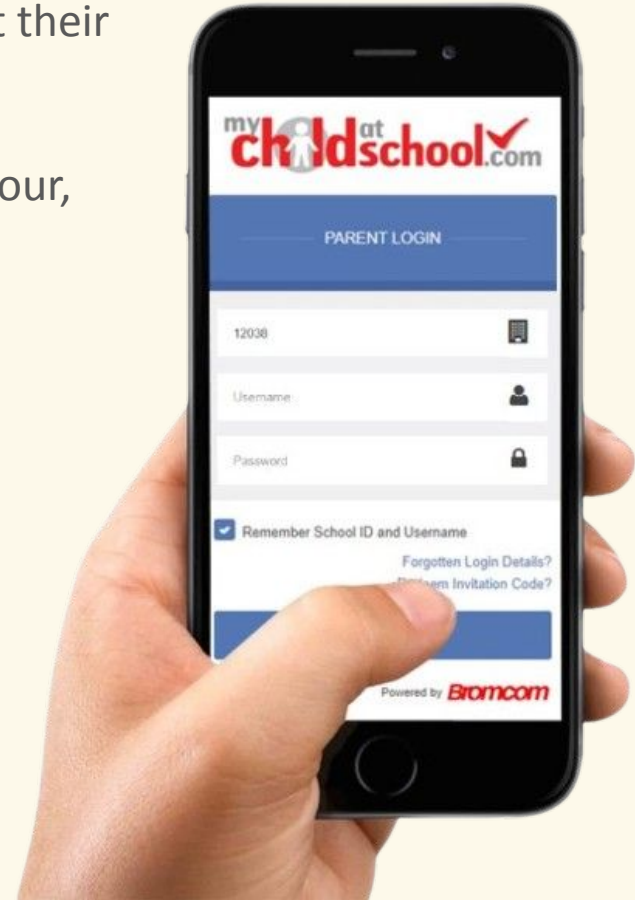
- Exceptional
 - Support
 - Teaching
 - Opportunities
- Next Steps
- Questions

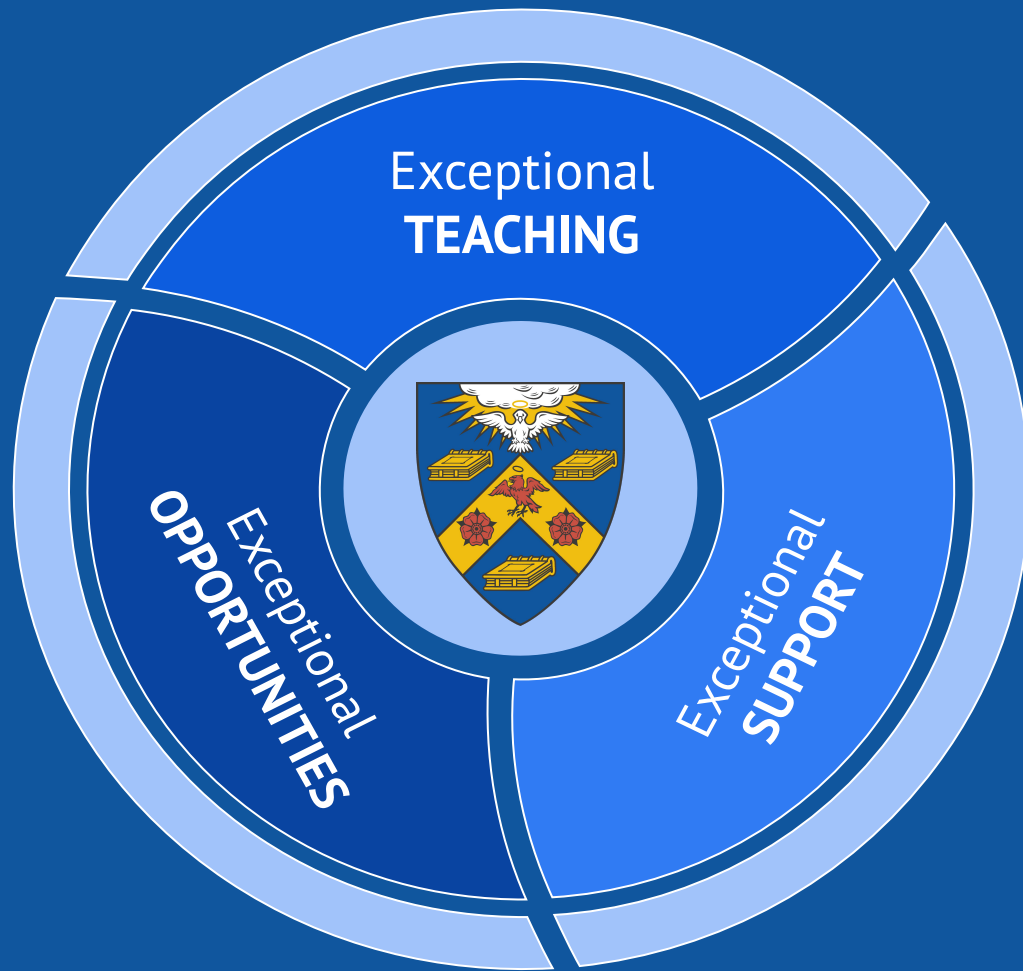


Exceptional Support

Parents/carers can track, monitor and support their child, every step of the way:

- **MCAS:** see your child's timetable, behaviour, reports, and other key information.
- **Google Classroom:** access your child's classwork, homework, and other key resources.





Leadership | Scholarship | Achievement

Exceptional
TEACHING



Leadership | Scholarship | Achievement

Exceptional TEACHING

"Pupils follow an **ambitious curriculum** that is designed to help them to learn and remember more. Teachers have high expectations of pupils. **As a result, pupils achieve well.**"

- Exceptional
 - Support
 - Teaching
 - Opportunities
- Next Steps
- Questions

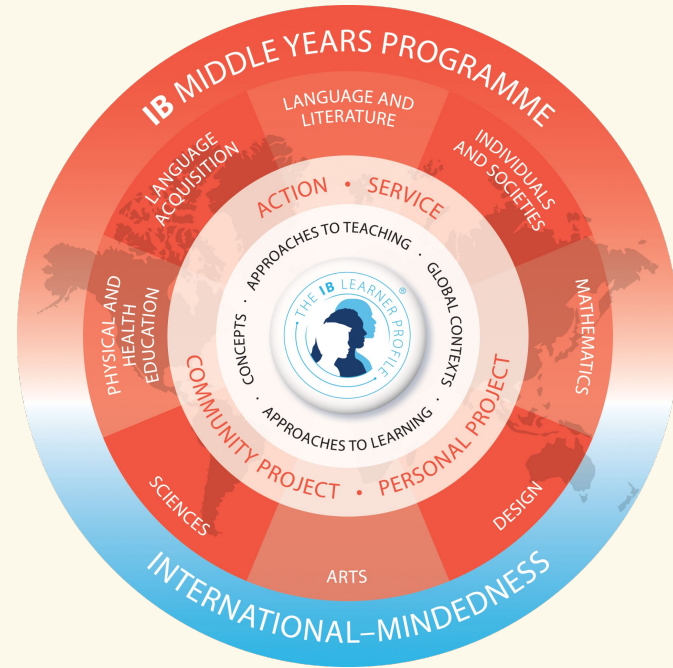


Exceptional Teaching



Pupils study 8 subject disciplines:

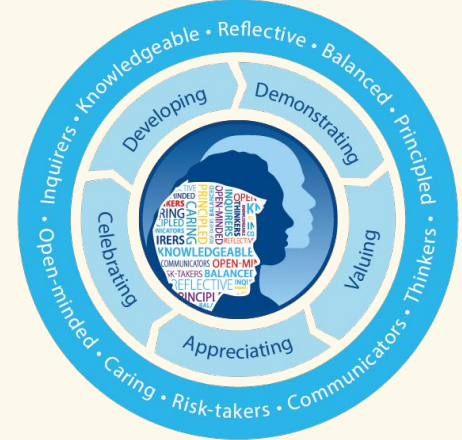
1. Language acquisition
2. Language and literature
3. Individuals and societies
4. Sciences
5. Mathematics
6. Arts
7. Physical and health education
8. Design



Exceptional Teaching

-

The diagram illustrates the IB Middle Years Programme (MYP) structure. It is a circular model with three main concentric layers. The outermost layer is a red ring with the text 'IB MIDDLE YEARS PROGRAMME' at the top and 'INTERNATIONAL-MINDEDNESS' at the bottom. The middle layer is a white ring with the text 'ACTION • SERVICE' at the top, 'CONCEPTS' on the left, 'APPROACHES TO TEACHING' on the right, and 'APPROACHES TO LEARNING' at the bottom. The innermost layer is a blue ring with the text 'LANGUAGE AND LITERATURE' at the top, 'LANGUAGE ACQUISITION' on the left, 'PHYSICAL AND HEALTH EDUCATION' on the right, and 'SCIENCE' at the bottom. The center of the diagram features a circular logo with a silhouette of a person's head and the text 'THE IB LEARNER PROFILE'.



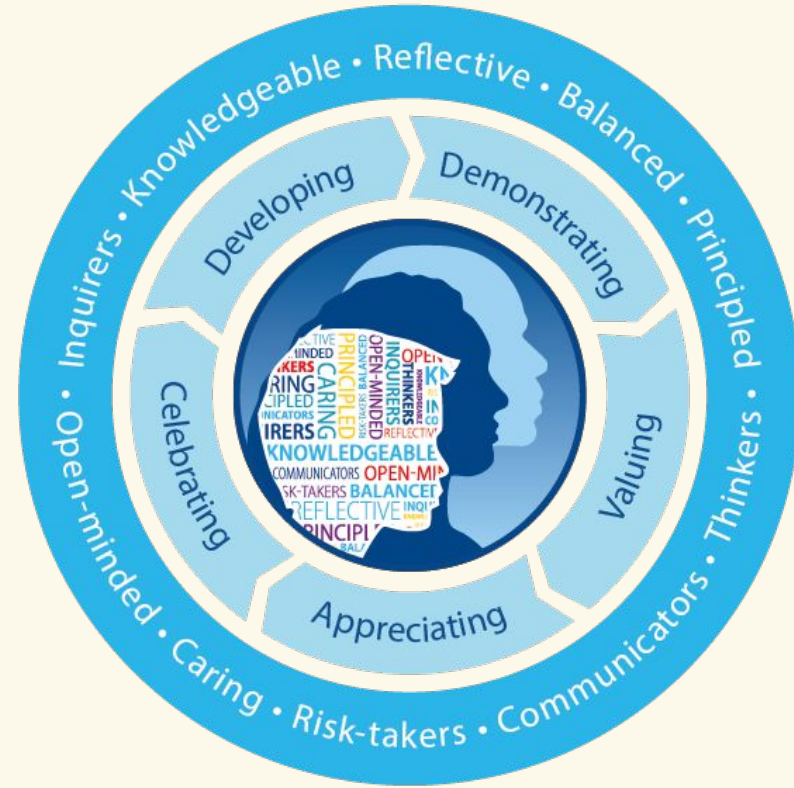
- Exceptional
 - Support
 - Teaching
 - Opportunities
- Next Steps
- Questions



Exceptional Teaching

Pupils also develop specific characteristics:

1. Inquirers
2. Knowledgeable
3. Thinkers
4. Communicators
5. Principled
6. Open-minded
7. Caring
8. Risk-takers
9. Balanced
10. Reflective



Exceptional Teaching | KS4

Acting (BTEC)	Digital Information Technology (BTEC)	Mathematics (GCSE)
Art (GCSE)	English Language (GCSE)	Music (GCSE)
Biology (GCSE)	English Literature (GCSE)	Photography (GCSE)
Business (GCSE)	Food & Nutrition (GCSE)	Physical Education (GCSE)
Chemistry (GCSE)	Geography (GCSE)	Physics (GCSE)
Combined Science (GCSE)	Health & Fitness (VCert)	Religious Studies (GCSE)
Computer Science (GCSE)	Health & Social Care (BTEC)	Retail Business (Tech Award)
Creative Media Production (BTEC)	History (GCSE)	Spanish (GCSE)
Dance (BTEC Performing Arts)	IT (BTEC)	Statistics (GCSE)
Design & Technology (GCSE)		

Exceptional Teaching | KS5

Art & Design (A-Level)	Health and Social Care (BTEC)	Politics (A-Level)
Biology (A-Level)	History (A-Level)	Product Design (DT A-Level)
Business (A-Level)	Law (A-Level)	Psychology (A-Level)
Chemistry (A-Level)	Mathematics (A-Level)	Sociology (A-Level)
Computer Science (A-Level)	Media Studies (A-Level)	Sports Studies (BTEC)
Economics (A-Level)	PE (A-Level)	T-Level Digital Production
English Literature (A-Level)	Photography (A-Level)	T-Level Finance
Further Maths (A-Level)	Physics (A-Level)	T-Level Media
Geography (A-Level)		

Welcome to Leigh Stationers' Academy

- Exceptional
 - Support
 - Teaching
 - Opportunities
- Next Steps
- Questions



Exceptional Teaching

Pupils follow an ambitious curriculum...as a result, pupils achieve well.

Exceptional Teaching

Progress & Attainment	2025
Progress 8	+0.3
Attainment 8	51.42
EBacc APS	4.7
Ebacc Entry %	59.00%

GCSE Headlines

- Best ever GCSE outcomes for the academy
- Average Point Score up +5.94 on 2024 and +1.27 on 2023
- Record EBacc entry rate of 59% – a 31% increase on 2023 - despite a more challenging curriculum, pupils achieved the academy's strongest results to date

Exceptional Teaching

2023	7+	5+	4+
Best English	33.5	76	88.2
2024	7+	5+	4+
Best English	24.2	63.8	79.6
2025	7+	5+	4+
Best English	30.6	76.5	88.2
2023	7+	5+	4+
Maths	17.7	63	81.5
2024	7+	5+	4+
Maths	21.1	56.6	74.3
2025	7+	5+	4+
Maths	29.8	62.4	81.6

English & Maths

- Around one-third of grades in English and Maths were at 7+
- **English (on 2024):**
 - 7+ up 6.4%
 - 5+ up 12.7%
 - 4+ up 8.6%
- **Maths (on 2024):**
 - 7+ up 8.7%
 - 5+ up 5.8%
 - 4+ up 7.3%

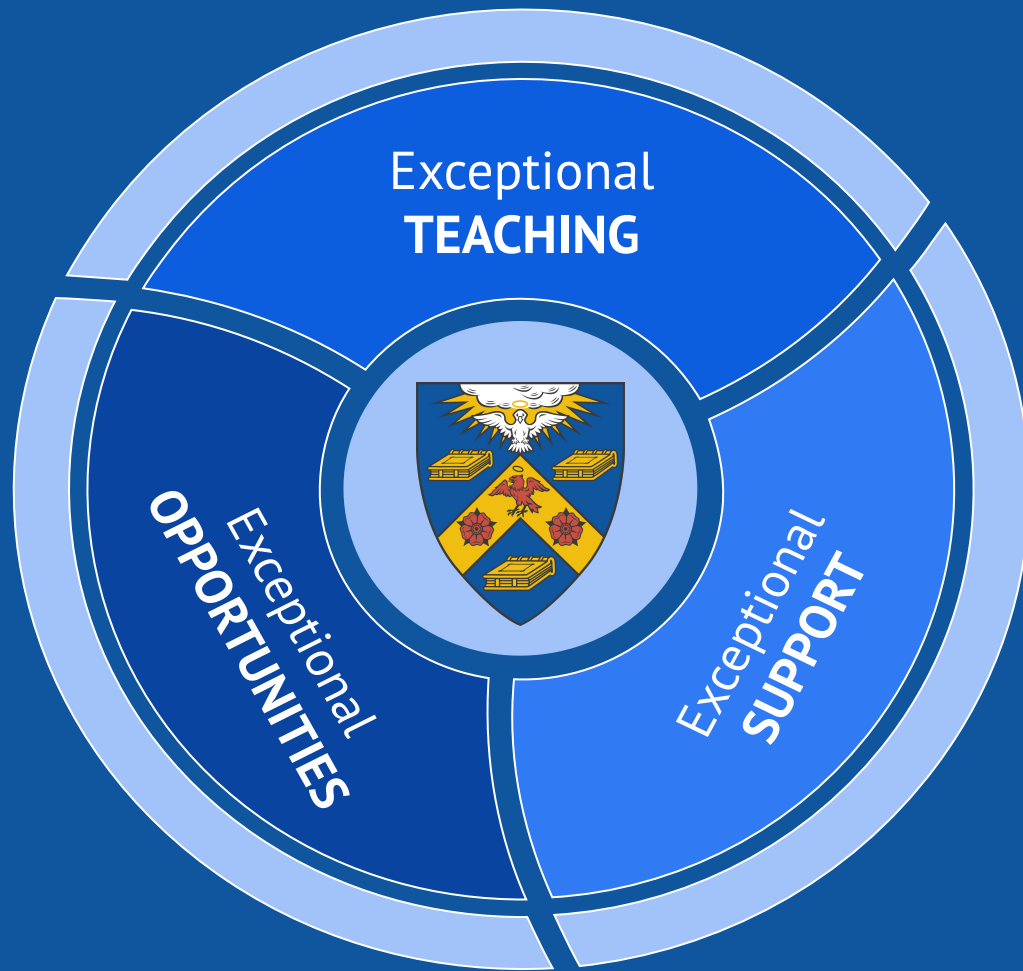
Exceptional Teaching

<<shortdate>>

Angelou College	Caxton College	Hansard College
Elliot – 7.44 Henry – 7.56 Leo – 7.61	Hajra – 7.89 Rim – 7.78 Lola – 7.57	George – 8.11 Muiz – 8.00 Nikita – 8.75 Rebecca – 8.67

Nikita (Hansard) achieved Grade 9s in English language, mathematics, history, Spanish, business, and a grade 9–9 in combined science, along with grade 8s in English literature and psychology.





Leadership | Scholarship | Achievement



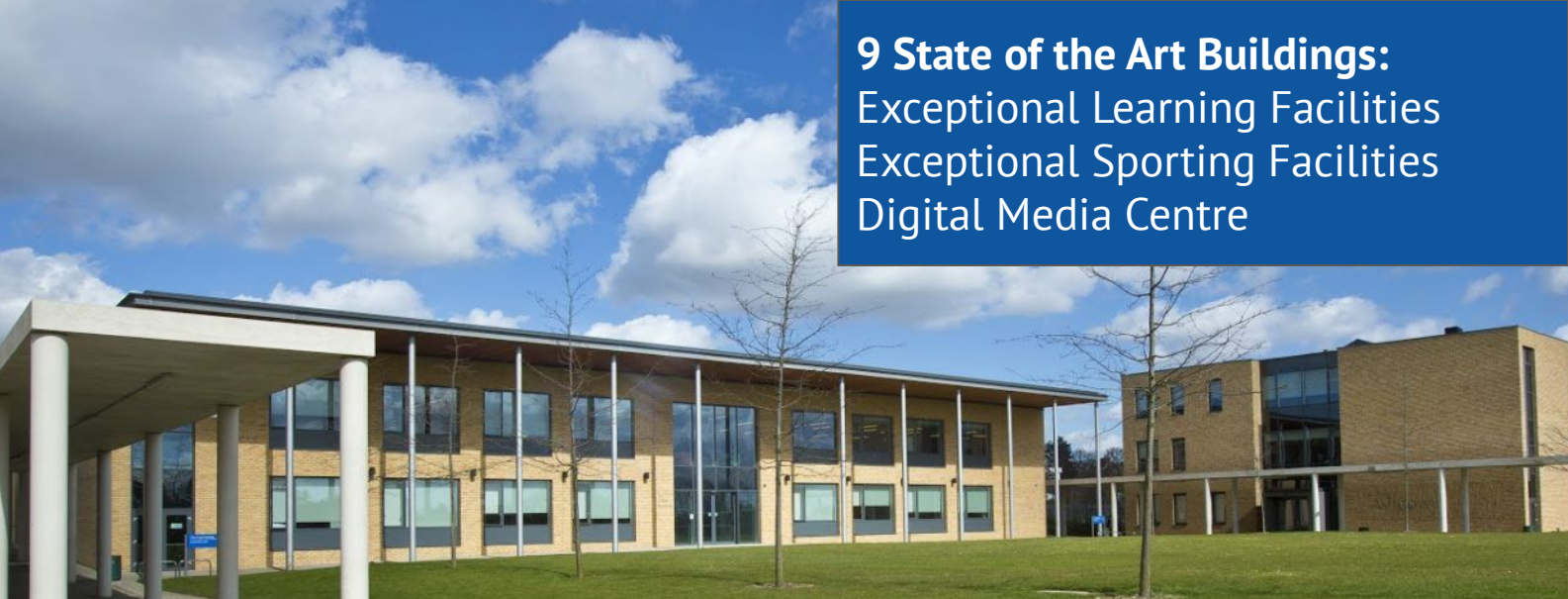
Leadership | Scholarship | Achievement

Exceptional **OPPORTUNITIES**

"A **rich range of visits and activities** are made available to pupils. Leaders have **high expectations for pupils' involvement** in these."

Welcome to
Leigh Stationers' Academy

- Exceptional
 - Support
 - Teaching
 - Opportunities
- Next Steps
- Questions



9 State of the Art Buildings:
Exceptional Learning Facilities
Exceptional Sporting Facilities
Digital Media Centre



- Exceptional
 - Support
 - Teaching
 - Opportunities
- Next Steps
- Questions



Exceptional Opportunities

Every pupil is given a
Chromebook and has access to
G Suite:

- Accessibility
- Portability
- Collaboration
- Security
- Online/Offline
- Simplified Maintenance
- Simplified Updates



G Suite For Education



Exceptional Opportunities

Monday	Tuesday	Thursday	Friday
Art & Textiles Club	Debate Club	Drama Club	Computing: ByteSized Code & Create
Art Club	Maths Club	Book Club	Year 8 Rock Band
Debunking Historical Myths	Music Club (Ukulele)	Orchestra	
History Mysteries & What Ifs	Year 9 Rock Band	Year 7 Rock Band	
Keyboard Club		Creative Science Club	
Over 50 different extracurricular clubs, visits and residential trips taking place every module.		Spanish & Latin American Culture	
		StoryLink Spanish Comics	

Welcome to
**Leigh Stationers'
Academy**

- Exceptional
 - Support
 - Teaching
 - Opportunities
- Next Steps
- Questions



Exceptional Opportunities

Shakespeare at Greenwich Theatre

Year 7 Lion King Theatre Visit

Year 7 The Globe Theatre Study Day

Year 7 PGL Residential

Pinewood Studios Visit

Geography Fieldwork Trip to Herne Bay

Cambridge University Study Day

Young Enterprise

Duke of Edinburgh

Malta Water Sports



Welcome to
Leigh Stationers' Academy

- Exceptional
 - Support
 - Teaching
 - Opportunities
- Next Steps
- Questions



Exceptional Opportunities

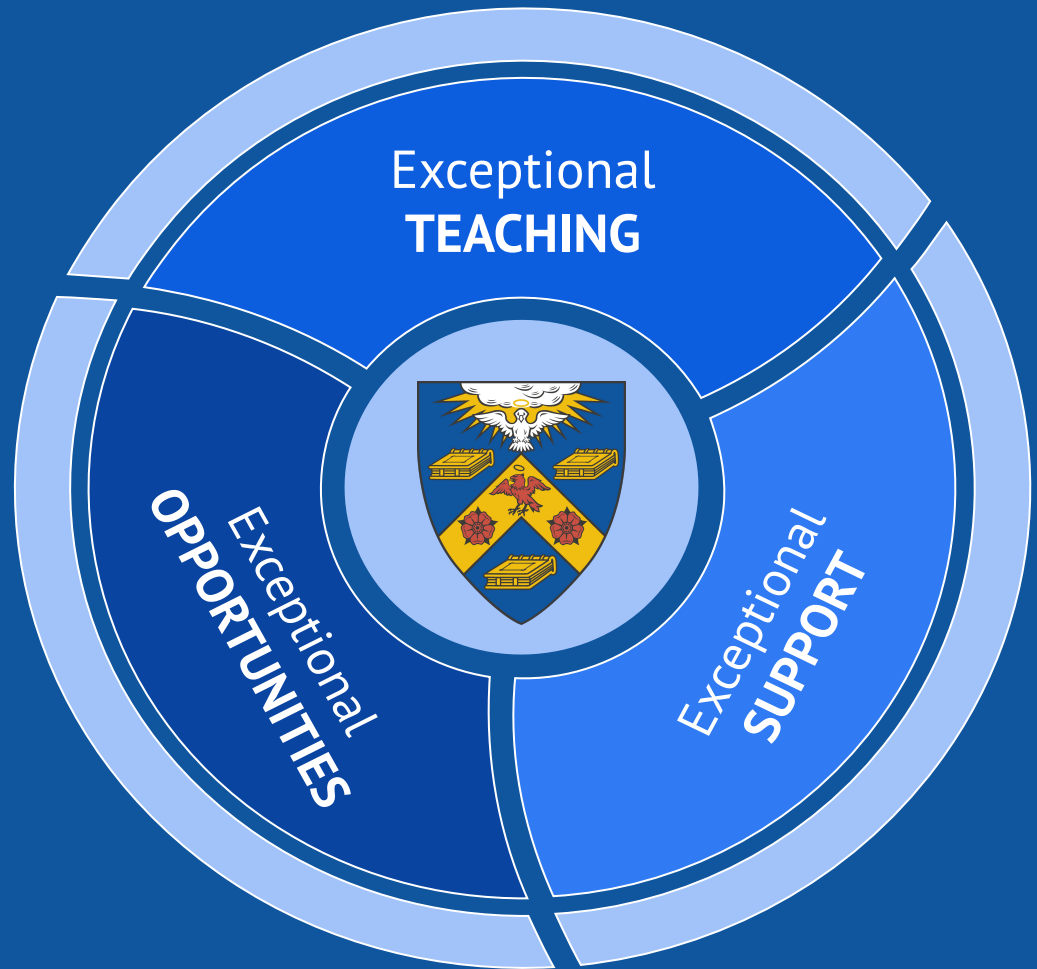


Year 7 PGL
Marchants Hill, Surrey

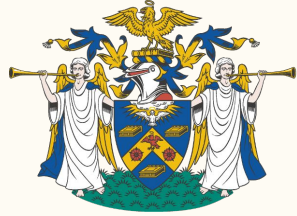


A COMMUNITY WHERE NO STUDENT IS LEFT BEHIND

...every young person should feel **known**,
valued, and **supported** to **succeed** –
academically, socially, and personally.



Leadership | Scholarship | Achievement



Leigh
Stationers' Academy

Next Steps

Key Dates for your Diary

Welcome to
Leigh Stationers' Academy

- Exceptional
 - Support
 - Teaching
 - Opportunities
- Next Steps
- Questions



Next Steps

Date	Event
Tuesday, 16 September 2025	Year 6 Open Evening
Wednesday, 17 September 2025	Year 6 Open Morning from 09:00-11:00
Thursday, 18 September 2025	Year 6 Open Morning from 09:00-11:00
Friday, 19 September 2025	Year 6 Open Morning from 09:00-11:00
Saturday, 11 October 2025	Fair Banding Test
Friday, 31 October 2025	Closing date for Local authority SCAF (secondary common application form) and Leigh Stationers' Academy Supplementary Form to be returned directly to the academy
Saturday, 29 November 2025	Fair Banding Test
Monday, 2 March 2026	National Offer Day
TBC - Wednesday, 1 July 2026	Induction Day at Leigh Stationers' Academy